

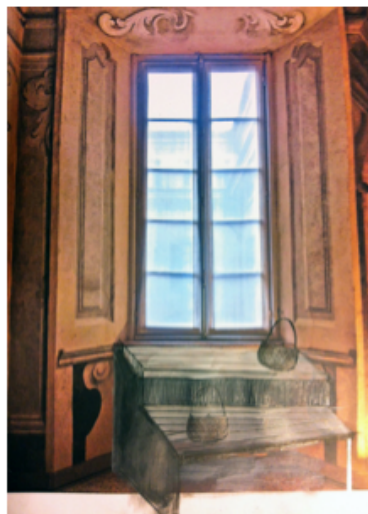
Nilufar will inaugurate the show on April 18, 2012, at 6,00 p.m. in Zagliani Showroom, Via Durini 24. Environmental-scale interventions by different artists and designers will coexist in the exhibition.

In the hall the flights of wooden modules-sculptures, created exclusively by American artist Lucy Dodd, will turn into elegant and unexpected exhibitors on the occasion.

The long central area will house an installation of prestigious "historical" pieces by architect-designer Gaetano Pesce. Maquettes of interiors and architectures, sculptures and 3D works in plastic resin will create a tour through rarities, starting from the end of the Eighties. A close encounter with ideas and unexpected solutions by a master in metaphorical images and poetic aesthetic and functional digressions.

The side rooms will welcome both the exhibition of the Irish Joseph Walsh and the environment by Massimo Uberti. The former is a young designer designing and manufacturing his unmistakable pieces: tables, chairs, armchairs or chaise-longues with soft and supple lines, evoking organic drawings and unexpected trends of nature. Massimo Uberti's installation exploits the light as a medium to mark and modify space. Uberti has created an imaginary house, the archetype par excellence, being still in progress. He has placed a high luminous stair and ghostly upholsterer's stands inside, dreaming about other, oneiric, metaphysical ways to live space.

LUCY DODD



Sculptural structure.

Plywood, wooden stakes, steel rods, sand and powder pigments finish.

"The concept of the work is to highlight, blend with and emphasize the perspectives and actions implied within the frescos. Working with the trompe l'oeil effect, the starting point and central theme will be to bring to life the painted staircase to the right of the entrance. Literally continuing the staircase and the railing into the space sculpturally[...]"

GAETANO PESCE



Puglia Cabinet

2007

Wood and papier-mache

154 x 45 x h 280 cm

60.68 x 17.73 x h 110.32 in.



Horse Cabinet

2006

Lacquered wood.

100 x 35 x h 208 cm

39.7 x 13.78 x h 81.89 in.



L'Abbraccio cabinet

2010

Polyurethane resin, lacquered wood, metal.

150 x 100 x h 240 cm

59.06 x 39.37 x h 94.49 in.



Sedia cresciuta

Maquette

2011

Sprayed felt with epoxy resin.

20 x 11 x h 20 cm

7.87 x 4.33 x h 7.87 in.



“Quel che non si può far grande...si può fare in piccolo”

Silicon carpet

2002.

201 x 350 cm

79.13 x 137.8 in.



Maquette

“El Liston” bar, 1986.

Realized by Gaetano Pesce inside the building designed by Aldo Rossi in Japan.

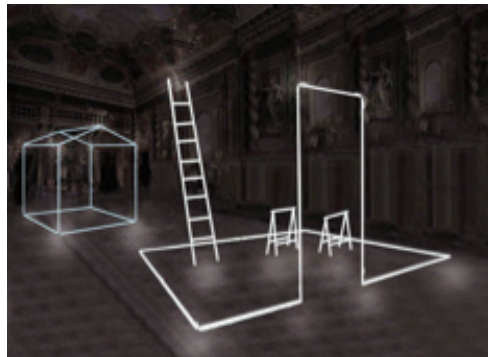
Unique example.

185 x 50 x h 87 cm

72.83 x 16.69 x h 34.25 in.

MASSIMO UBERTI

LINEE DI COSTRUZIONE



Neon lights, transformer, silver wire.
Italy, 2012.



JOSEPH WALSH

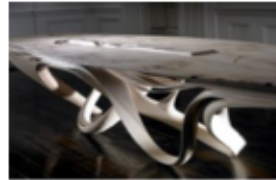
Enignum two seater

2011.

Olive ash, suede.

115 x 220 x h 84 cm

45.28 x 86.61 x h 33.07 in.



Enignum dining table

2012.

Olive ash, glass.

370 x 110 x h 74 cm

145.67 x 43.31 x h 29.13 in.



Enignum IV copper chair

2011.

Olive ash, copper, white oil.

56 cm x 94 x h 75 cm

22 x 37 x h 29.5 in.



Enignum low table

2012

Olive ash, glass.

170 x 65 x h 40 cm

66.9 x 25.6 x h 15.7 in.

Art Director:
Giancarlo Montebello

Opening:

Wednesday 18th April 2012 – from 6 pm. to 11 pm.

Open to public:

From 17th to 22nd April 2012 – from 10 am. to 8 pm.

Press Office:

C-Zone

Via Marco Polo, 4 – 20124 Milano

tel. + 39 02 89699706

Info:

GALLERIA NILUFAR

via della Spiga 32 - 20121 Milano

www.nilufar.com

mail agira@nilufar.com

tel. + 39 (0)2 78 01 93

fax + 39 (0)2 76 00 76 57